

design

aspire

home

MINDFUL of *OUR SPIRIT*

seeking
the sublime

\$15.95

4 1 >



0 09128 64924 5
WINTER 2024 | DISPLAY UNTIL 3/19/24

BLACK + WHITE DESIGN

FINDING BALANCE





In the living room, a banquette designed by the homeowners is covered in a coral Pierre Frey fabric. The barstools were discovered in an old warehouse and reupholstered in a Kelly Wearstler fabric. Beyond the walnut and brass sliding door sits a Gubi Pacha chair upholstered in fuzzy virgin wool by Designs of the Time.

Welkom!

Vivid and whimsical aspects of
this Bussum, the Netherlands home
light up a room

TEXT TATE GUNNERSON PHOTOGRAPHY SPACE CONTENT STUDIO
INTERIOR DESIGN EVEN ELEVEN

You say to a brick, 'What do you want, Brick?' And Brick says to you, 'I like an arch.' And you say to Brick, 'Look, I want one, too, but arches are expensive and I can use a concrete lintel.'

And then you say: 'What do you think of that, Brick?'

Brick says: 'I like an arch.'

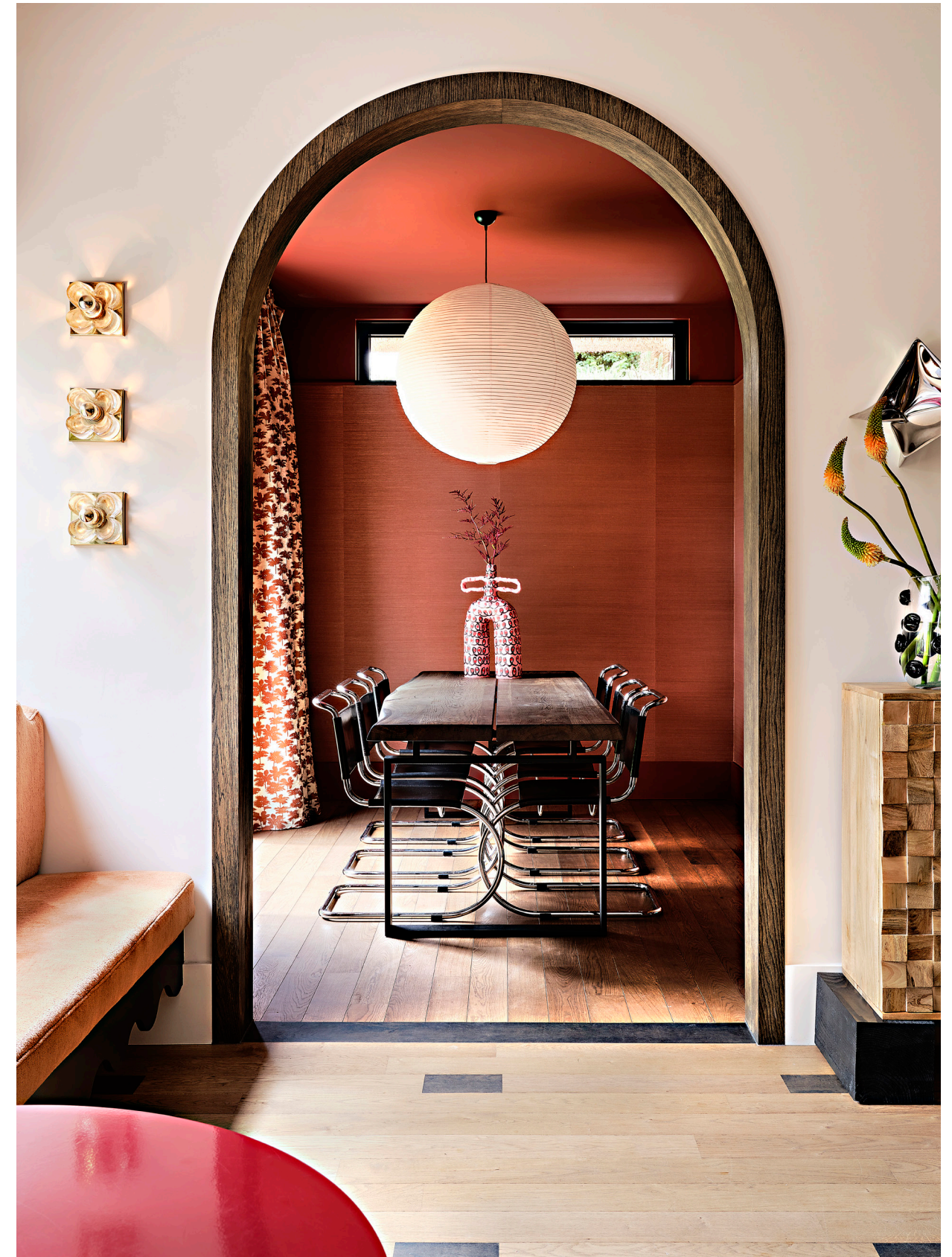
- Louis Kahn

A

n interior is not quite a room until it is furnished – even if that means nothing more than a table and chair. But sometimes, a space seems not so much filled as inscribed. Like handwriting on a page, the work of a designer can be almost graphic, penned in lines and curves. From its front door, where an elongated brass handle is cast in a serpentine shape, to the squiggly balusters of the staircase inside, the home of designers Pieter Jager and Michelle Jager van 't Hof possesses a calligraphic quality.

Situated in the town of Bussum, about 16 miles from Amsterdam, the couple's house – which they designed themselves – sits in a neighborhood of established homes characterized by brick, gabled roofs and stained-glass windows. "We wanted our house to blend with its surroundings, so we decided to create a modern interpretation of the traditional corbels, playful roof slopes and brickwork," explains Pieter. "We opted for charred wood as cladding and a thatched roof that seems to envelop the house like a cozy blanket."

Pieter and Michelle operate their design business, Even Eleven, from a freestanding studio next to their home, which features a kitchen and an open-air dining room where they have lunch with clients and colleagues. The two have executed a range of residential projects, from a mansion to a modern penthouse. They arranged their own home – which they share with their three young children and dog Billie – on a semi-open plan with dramatic changes in wall color and arched doorways to give each area its own identity. "By having separate spaces, it becomes easier to incorporate various colors and styles," notes Michelle. "However, by repeating specific colors and shapes, we ensure there's a connection between different areas."



OPPOSITE The walnut doors and faceted cabinet are both Even Eleven designs.
ABOVE The dining room is enveloped in Picture Gallery Red by Farrow & Ball and a rosy seagrass wallpaper by Greenland.



“By having separate spaces, it becomes easier to incorporate various colors and styles,” notes Michelle. “However, by repeating specific colors and shapes, we ensure there’s a connection between different areas.”



Painted in Farrow & Ball's Faded Terracotta and Rangwali.



An Atelier Areti lamp sits atop a side table from Normann Copenhagen.



A sleek sofa from Dutch-based Interiors DMF sits on Even Eleven's Game On rug.

Natural wood and stone, along with handwoven fabrics, are key elements, but so, too, are high-design pieces, such as vintage MR10 Chairs by Mies van der Rohe and a Gubi Pacha Chair that Michelle had reupholstered in fuzzy virgin wool. A Memphis-like aspect pervades the home as well, especially in the living room, where the wavy-topped banquette the couple designed enjoys the company of an Endless Chair by Dirk van der Kooij and a bright-red, tool-like table obtained on 1stDibs. The play of lines in the house, from the Kelly Wearstler fabric on the vintage Börje Johanson bar stools (retrieved from an old warehouse) and an Even Eleven rug in a backgammon pattern to the walnut-framed doorways and the black squares that punctuate the wood floors, are among the details that give the home its graphic punch.

"Assembling an interior that resonates with you is a time-consuming pursuit," admits Michelle, who scoured markets online and off to find pieces that would contribute to the lively ambiance she and Pieter were out to create. "And it's wonderful," adds Pieter, "to collaborate with artisans who passionately brainstorm how to bring our designs to life." Between the pieces they've sourced and the furnishings they designed themselves, Pieter and Michelle have created a highly individual home, sophisticated yet playful, smart but not stuffy. As the Dutch say, "East, West, home is best."